

You have been scheduled for: \_\_\_\_\_ Date: \_\_\_\_\_ Time: \_\_\_\_\_ At: \_\_\_\_\_

## Concord Hospital Campus

### Concord Hospital

250 Pleasant Street, Main Entrance



Park in Lot A

- AMU
- Ambulatory Care Center (including infusion therapy)
- Day Surgery Center
- Diagnostic Services
- Pre-Surgical Testing Center
- Rehabilitation Services: Cardiac and Pulmonary Rehab, Speech Language Pathology
- Wound Healing Center

### Payson Center for Cancer Care

250 Pleasant Street, Payson Center Entrance



Park in Lot B or Lot A1

- NH Oncology-Hematology, PA
- Radiation Oncology Department

### Concord Orthopaedics

246 Pleasant Street

(See map on reverse side)

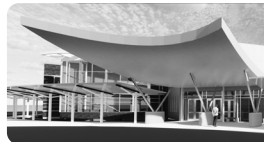


Your Regional Health Resource

Referring Provider: \_\_\_\_\_

### Memorial Medical Office Building

246 Pleasant Street, Main Entrance



Park in Lot E

#### Memorial West

##### Ground Floor

- Concord Hospital Cardiovascular Institute, including:
  - Concord Hospital Cardiology
  - Concord Hospital Cardiothoracic Surgery
  - Concord Hospital Vascular Surgery
- Concord Hospital Neurology
- Concord Hospital Pulmonary and Critical Care Medicine

##### Floor 1

- Concord Hospital Obstetrics and Gynecology
- Concord Hospital Urologic Institute
- Concord Hospital Pelvic Medicine

##### Floor 2

- Concord Hospital Internal Medicine
- Concord Hospital Anticoagulation Clinic
- Concord Eye Surgery, LLC

#### Memorial East

##### Floor 1

- The Prescription Center ..... Suite 100
- Concord Hospital Laboratory ..... Suite 102
- Infectious Disease & Travel Clinic ..... Suite 104
- New Hampshire NeuroSpine Institute ..... Suite 107

##### Floor 2

- Capital Orthotics & Prosthetics ..... Suite 200
- Concord Surgical Associates ..... Suite 205
- Capital Region Palliative Care ..... Suite 206
- Concord Plastic Surgery ..... Suite 210
- Gentle Dental ..... Suite 225

### Pillsbury Medical Office Building

248 Pleasant Street, Ground Floor Entrance



Park in Lot G

#### Ground Floor (Park in Lot G)

- Nephrology Associates, PA ..... Suite G300
- NH Kidney Center ..... Suite G400

### Pillsbury Medical Office Building

248 Pleasant Street, Main Entrance



Park in Lot F or Lot N

#### Floor 1

- Concord Imaging Center (CIC) ..... Suite 102
- Concord Dermatology ..... Suite 103
- Breast Imaging Suite at CIC ..... Suite 106
- Concord Pediatrics ..... Suite 1700
- Concord Eye Care ..... Suite 1800

#### Floor 2

- Occupational Health/Employee Health ..... Suite 202 (November 2020)
- Affiliates in Podiatry ..... Suite 203
- Breast Care Center (park in Lot E3) ..... Suite 206

### Breast Center Entrance

248 Pleasant Street



Park in Lot E3

#### Floor 2

- Breast Care Center ..... Suite 206

# Main Campus Guide for Patients

**CONCORD HOSPITAL** ..... Please park in **LOT A** or **LOT E**

Concord Hospital Payson Center for Cancer Care ..... Please park in **LOT A1** or **LOT B**

The Jim and Marianne Cook Emergency Department ..... Please park in **LOT D**

**Memorial Medical Office Building** ..... Please park in **LOT E**

**Pillsbury Medical Office Building** ..... Please park in **LOT F** or **LOT N**

Concord Hospital Breast Care Center ..... Please park in **LOT E3**

**Hospice House / EAP / Philanthropy** ..... Please park in **LOT C**

**Yeaple Building / Concord Hospital Family Health Center** ..... Please park in **LOT A**

## Need Help?

Please call **(603) 225-2711** and ask for **Security** (ext. 3999).

These are suggested parking areas for our patients' convenience, but all lots are open for patient use.

[concordhospital.org](http://concordhospital.org)

